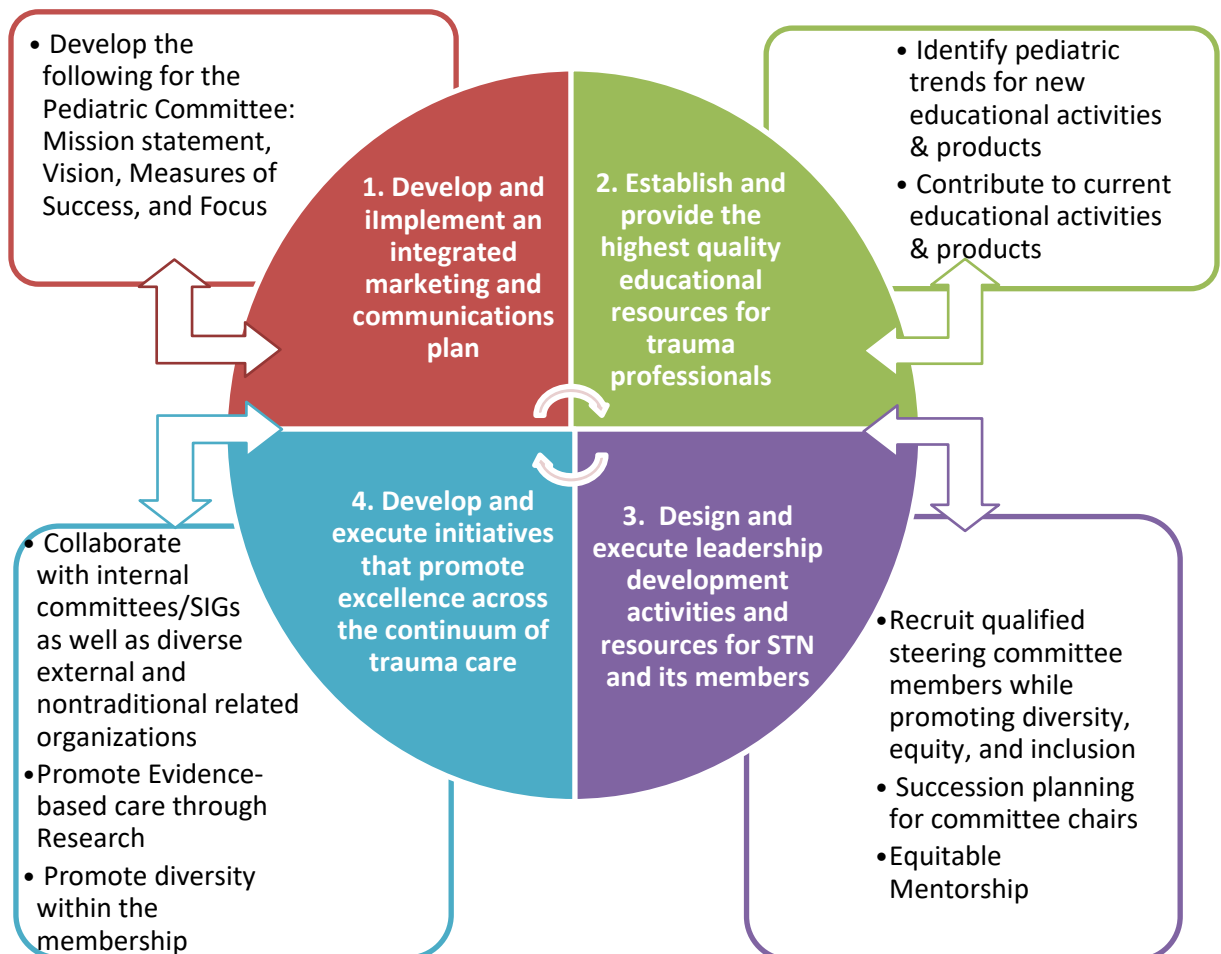




STN Pediatric Steering Committee Strategic Plan

Mission	Vision	Measures of Success	Focus
<ul style="list-style-type: none"> The Pediatric Steering Committee will serve as the resource within STN for assuring diverse, equitable and inclusive collaboration and development of expertise for optimal care and outcomes for the injured child and family. 	<ul style="list-style-type: none"> To be the premiere pediatric trauma nursing resource by striving to highlight the unique needs of injured children and their families. 	<ul style="list-style-type: none"> Implementation and dissemination of the Pediatric Steering Committee policy and procedure Diverse and inclusive Committee and SIG member engagement and participation Educational activities expansion Develop and sustain partnerships and collaborations while promoting diversity and inclusion. 	<ul style="list-style-type: none"> Communication Education Membership Leadership Collaboration Diversity, Equity, and Inclusion Evidence-based Care and Research to provide Optimal Care Outreach and Injury prevention



1. Develop and implement an integrated marketing and communications plan

- Develop the following for the Pediatric Steering Committee: Mission statement, Vision, Measures of Success, and Focus
- *Focus on defining the pediatric steering committee and its relationship to the SIG. The description should answer why a member would want to join the SIG (or volunteer to be a steering committee member) and also take this opportunity to define the target audience (i.e. include nurses in both pediatric institutions and nurses in adult institutions caring for kids).*

2. Establish and Provide the Highest Quality Educational Resources for Trauma Professionals

- Identify pediatric trends for new educational activities & products
- Contribute to current educational activities & products
- *Provide diverse pediatric expertise for educational activities & products including, but not limited, to the Annual Conference, ATCN, TOPIC, e-Library and JTN*

3. Design and Execute Leadership Development Activities and Resources for STN and its Members

- Recruit qualified committee members while promoting diversity, equity, and inclusion
- Succession planning for committee chairs
- Equitable Mentorship
- *Using the STN Committee Policy and Procedure as a guide, develop and implement a committee member application and committee chair succession plan using competency-based criteria*

4. Develop and Execute Initiatives that Promote Excellence across the Continuum of Trauma Care

- Collaborate with internal committees/SIGs as well as diverse external and nontraditional related organizations
- *Identify potential partners both internally and externally and establish how STN and the Pediatric Steering Committee can partner to enhance the care of injured patients*
- Promote Evidence-based care through Research
- Promote diverse and inclusive membership
- *Promote STN as the premier organization for trauma care across the continuum with an **emphasis on the pediatric committee as the leader in the care of injured pediatric patients***